

ANCHORLINE

Brokerage | Insurance | Valuations

PACIFIC LADY



1978 GRAND BANKS

42 Classic

PACIFIC LADY

SPECIFICATIONS

NAME	Pacific Lady
REGISTRATION NUMBER	GB42CN
MAKE	Grand Banks
MODEL	42 Classic
DESIGNER	Grand Banks Yachts
BUILDER	Grand Banks Yachts
BUILD NUMBER	42 - 605
YEAR BUILT	1978
LENGTH (Overall)	43'3" (16.5m)
LENGTH (Waterline)	41'1" (12.5m)
BEAM	14'1" (4.9m)
DRAFT	4'2" (1.2m)
CONSTRUCTION	Fibreglass
DECKS (Construction)	Teak laid decks (original)
COLOUR & TRIM	White with green covers.

ACCOMMODATION

SINGLE BERTHS	2
DOUBLE BERTHS	1
TOTAL ACCOMMODATION	4 (plus saloon settee)
LINEN	No
TOILETS	1 x Tecma (aft cabin) 1 X TMC (forward cabin)
HOLDING TANK	Yes (fitted with Globius tank monitor)
TREATMENT SYSTEM	No
HOLDING TANK LOCATION	Engine room
SHOWERS	2
INTERIOR FINISH	Teak interior furnishings
AIR CONDITIONING	3 Units
WASHING MACHINE	Dometic WMDI050

(Continued on page 3)

GALLEY

LOCATION	Main Saloon, Port Side
REFRIGERATION	Nova-Kool fridge & freezer (Galley)
COOKTOP	Belling (240v)
OVEN	Belling (240v)
MICROWAVE	Panasonic
ICE MAKER	U - Line
WATER PRESSURE SYSTEM	Yes
WATER HEATER	Yes (Engine room)
DESALINATOR	FCI Aquamiser Plus
BBQ	Gallemate

MACHINERY & TANKS

NUMBER OF ENGINES	Two
MAKE	Ford Lehman's
HORSEPOWER	120hp
CYLINDERS	6
GEAR BOX	Borg Warner
COOLING TYPE	Heat exchanger
EXHAUST TYPE	Wet
CRUISE SPEED	9 Knots
PORT ENGINE HOURS	765hrs (since rebuild)
STARBOARD ENGINE HOURS	765hrs (since rebuild)
NUMBER OF FUEL TANKS	2
FUEL TANK CONSTRUCTION	Stainless Steel
FUEL CAPACITY	2700 Litres
FUEL TANK LOCATION	Engine Room
NUMBER OF WATER TANKS	3
WATER CAPACITY	600 Litres
WATER TANK LOCATION	Lazarette
STEERING	Cable
CONTROLS	Morse
PROPELLERS	3 Blade

ELECTRICAL EQUIPMENT

SYSTEM VOLTAGE	12v / 24v / 240v
GENERATOR	Onan 10 KVA
GENERATOR HOURS	2438 (24/10/22)
HOUSE BATTERIES	2 x 200 amp/hr
ENGINE BATTERIES	2 x 200 amp/hr
GENERATOR BATTERY	1 x 200 amp/hr
BATTERY CHARGER	Mastervolt Mass 12/60
SHORE POWER	Yes
SHORE POWER LEAD	Yes
INVERTER	No

(Continued on page 4)

The information included in this inventory is believed to be correct, but is not guaranteed. This vessel is subject to prior sale or removal from sale without notice.

NAVIGATION EQUIPMENT

VHF RADIO	Icom IC - 2100H & Shakespeare SE2001EX
DEPTH SOUNDER	Furuno FCV - 1200L (colour)
RADAR	Simrad Anritsu
GPS	Lorenz Starlight Pro
GPS & CHARTS	C - Map NT Max East coast of Australia
MONITOR	Samsung (connected to Lorenz)
AUTO PILOT	Simrad Robertson AP20
WIND INDICATOR	Raymarine
COMPASS	Yes x 2
CLOCK	1 x Brass

ENTERTAINMENT SYSTEMS

TELEVISION	Samsung
DVD PLAYER	Panasonic
STEREO	Bose speakers

GROUND TACKLE

ANCHORS	Bruce
WINDLASS	Lofrans Tigres (TG 017802)
WINDLASS CONTROL	Helm
CHAIN	Galvanised (5/16 th)

SAFETY EQUIPMENT

FIRE EXTINGUISHERS	Handheld extinguishers
EPIRB	Yes x 1 (expires 21/12/16 BEE 4074F400355)
FLARES	No
LIFE JACKETS	Yes x 6
LIFE RING	Yes x 2
BILGE PUMPS	2 x Electric
LIFE RAFT	No

GENERAL INFORMATION

DECK WASH	Fore and Aft
FENDERS	Yes
MOORING LINES	Yes
SPOT LIGHT	Yes
COVERS	Exterior covers Brightwork covers Window covers Aft deck curtains Flybridge covers
DINGHY	Aluminium
OUTBOARD	5hp Mercury
DAVITS\CRANE	Transom mounted davits (manual)
SWIM LADDER	Yes
LAST SLIPPED & ANTFOULED	November 2022
LYING	Coomera, Gold Coast
PRICE	\$265,000.00



Pacific Lady



Pacific Lady



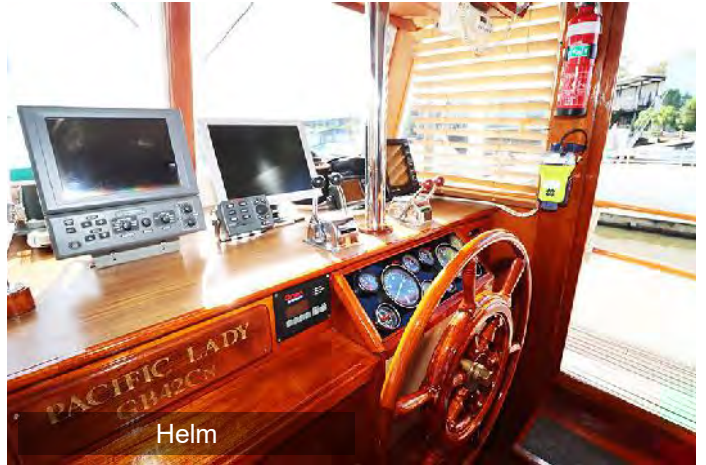
Saloon



Saloon



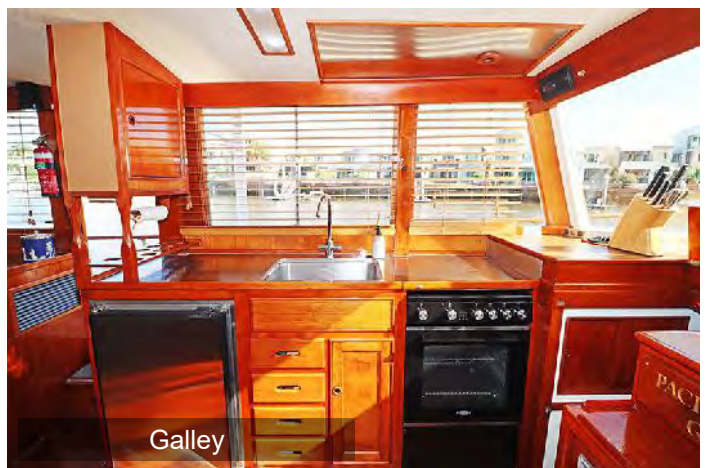
Saloon



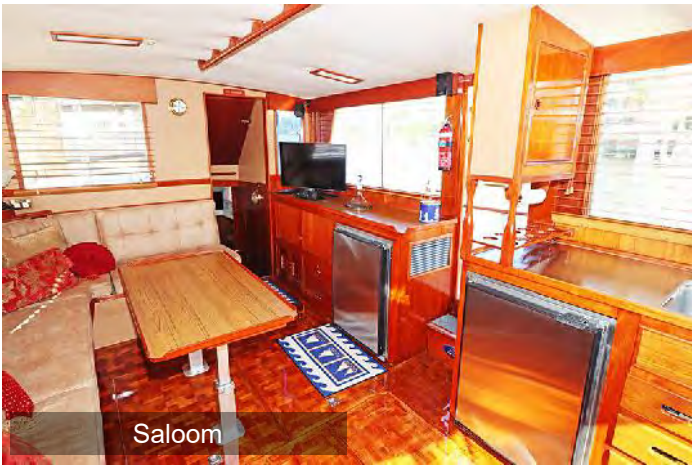
Helm



Helm



Galley



Saloom



Saloon



Saloon



Master Cabin



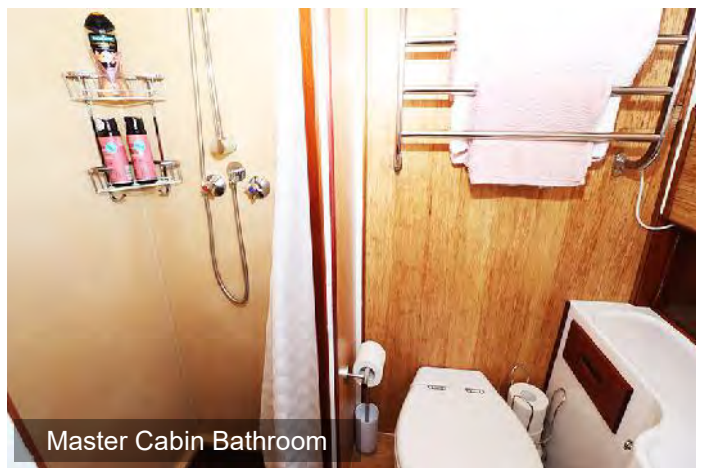
Master Cabin



Master Cabin



Master Cabin Bathroom



Master Cabin Bathroom



Master Cabin



Forward Cabin



Forward Cabin



Forward Cabin



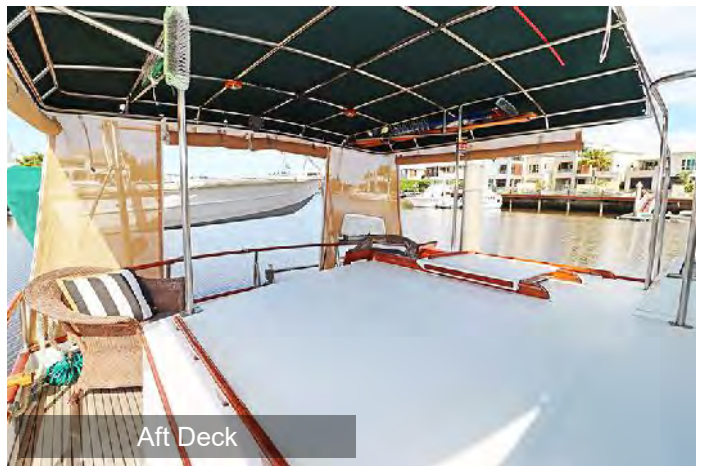
Forward Cabin Bathroom



Forward Cabin Bathroom

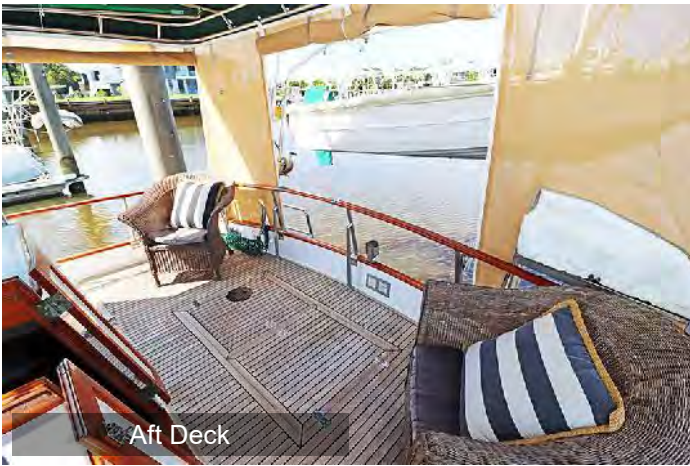


Washing Machine

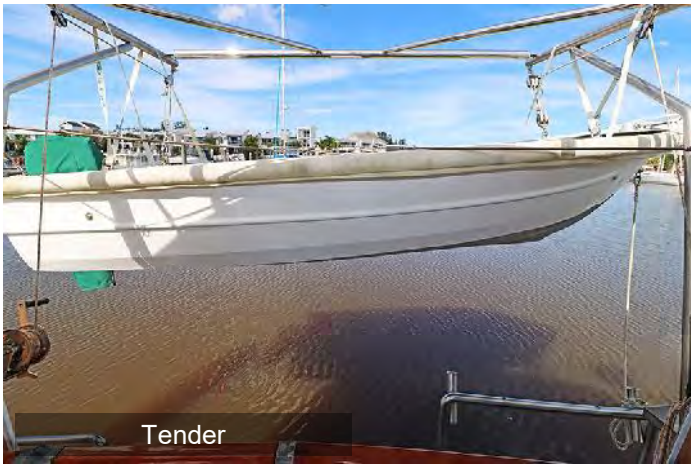


Aft Deck

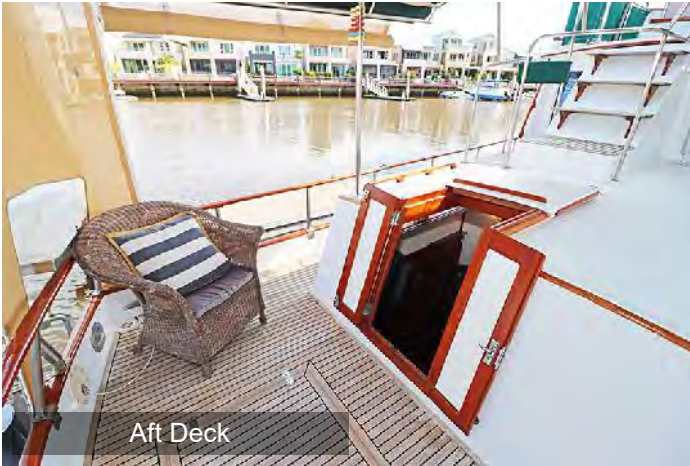
The information included in this inventory is believed to be correct, but is not guaranteed. This vessel is subject to prior sale or removal from sale without notice.



Aft Deck



Tender



Aft Deck



Aft Deck



Aft Deck



Flybridge



Flybridge



Flybridge

The information included in this inventory is believed to be correct, but is not guaranteed. This vessel is subject to prior sale or removal from sale without notice.



Flybridge



Port Side Deck



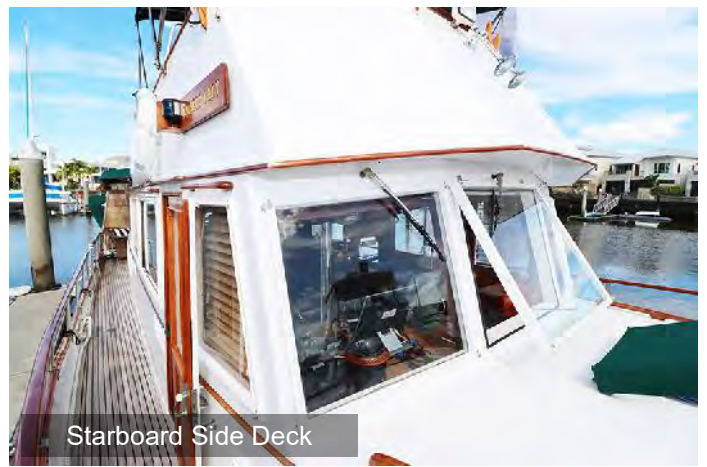
Bow



Bow



Anchor Winch



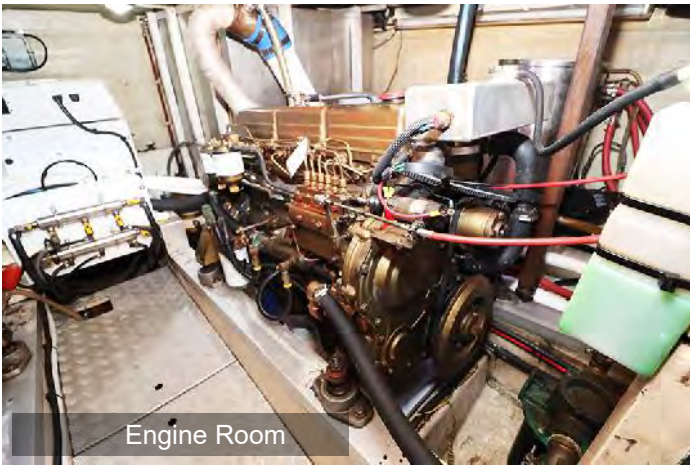
Starboard Side Deck



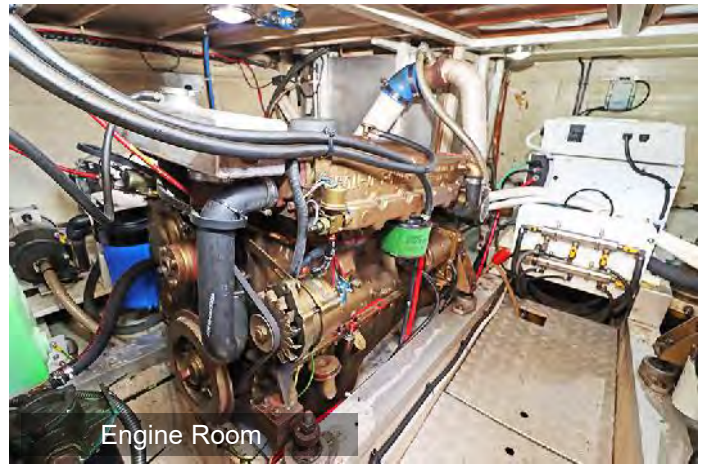
Name



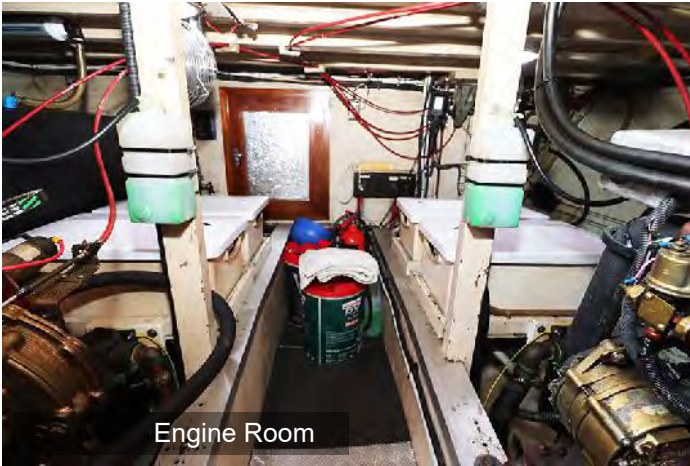
Engine Room



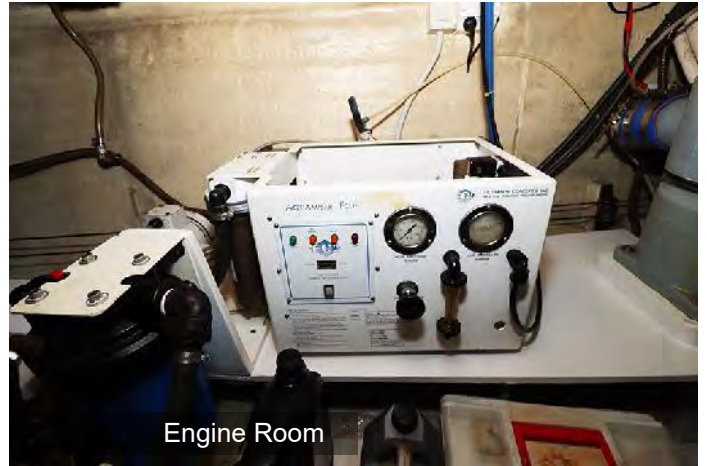
Engine Room



Engine Room



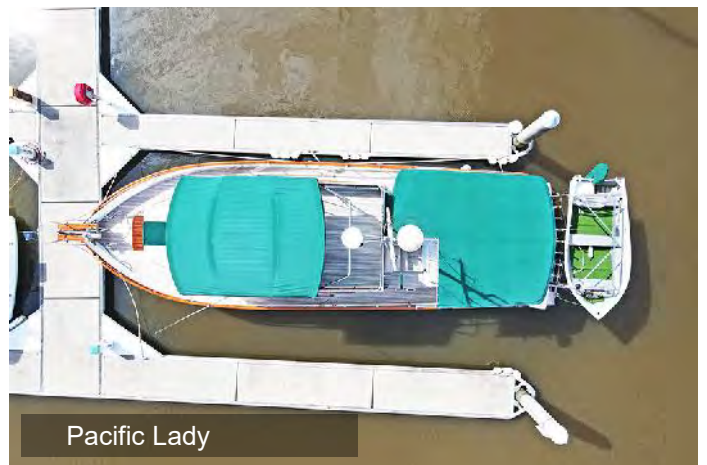
Engine Room



Engine Room



Pacific Lady



Pacific Lady



Pacific Lady



Pacific Lady

The information included in this inventory is believed to be correct, but is not guaranteed. This vessel is subject to prior sale or removal from sale without notice.



GRAND BANKS

