

ANCHORLINE

BROKERAGE | INSURANCE | VALUATIONS

WINDWARD PASSAGE



62' Steel Passagemaker

The information included in this inventory is believed to be correct, but is not guaranteed. This vessel is subject to prior sale or removal from sale without notice.



WINDWARD PASSAGE

You'd be forgiven for assuming that Windward Passage is a traditional trawler style passage maker when looking at her robust and purposeful appearance. However, whilst she is certainly a strong and certainly qualifies as a true passagemaker, internally she is anything but traditional.

This steel long-range motor yacht has cruised extensively with her current and previous owners. She has proven to be reliable, extremely capable, and safe. Her current owners, following an exhaustive search to find a vessel to suit their requirements, chose Windward Passage because of her proven ability to cruise to remote locations and be handled by two people.

Following the purchase, they used their 40 plus years (50,000 ocean miles under sail and power) of boating experience and knowledge to undertake and supervise a complete refit of Windward Passage, from bow to stern. Below the waterline, the entire vessel was sand blasted, and then epoxy coated. A bow thruster was installed, and the number of underwater hull openings were reduced to an absolute minimum. The exterior then had a complete polyurethane exterior re-spray and all new antifouling coatings were applied.

With the intention of spending long periods of time onboard and the desire to have confidence in fixtures, fittings, and systems, the decision was made to undertake an entire interior remodel and refit. This included all new joinery, wiring, plumbing, flooring, appliances, and soft furnishings. The result, a much more modern, light, spacious, functional, and practical interior. Features include a beautifully appointed saloon (that would rival most modern apartments in size) and a gourmet galley with stone benchtops, a gas cooktop, electric oven, and separate grill. For the chef there is also an Italian coffee machine, bread maker, and electric pizza oven.

Aft of the saloon is the private master stateroom and ensuite. A beautiful retreat with island queen size berth, plenty of cupboards and wardrobe storage and loads of light and space. There are an additional three guest's cabin, including a double cabin forward of the saloon and two single berth cabins. All cabins have private ensuites. With the inclusion of a cabin on behind the wheelhouse, Windward Passage is perfect if you are wanting a skipper to go cruising with you.

The use of lime washed Victorian Ash panelling throughout, custom furnishings, and beautiful original artworks coupled with air conditioning, entertainment systems and all the creature comforts of home, the 'floating apartment' feel that was wanted has certainly been achieved.

The number one request from serious cruising folk is a 'walk-in' engine room and Windward Passage provides one of the best we have seen. Over 6' of head room enables you to walk around freely with access right around both Caterpillar main engines, the two generators and ease of access for viewing and maintaining all systems. The engine room also includes a stainless-steel work bench and an extensive tool board and vice. Ahead of the engine room are the laundry facilities with separate washing machine and dryer.

(Continued on page 3)

(Continued from page 2)

There is an abundance of external space on Windward Passage and a whole host of toys to keep you entertained when at anchor. There's a Stand-Up paddleboard, two kayaks, and a twin regulator Powerdive Hookah unit (for diving). A glass bottom boat (Coral Viewer) for inspecting the reef which is powered by a jet drive and is equipped with its own lithium battery. A 2.9m RIB with 3.3hp is perfect for quick trip to the shore, it even has its own custom-made lift on the starboard side of the Windward Passage, to keep her out of the water at night-time. Her large main tender (fondly referred to as the Pope Mobile) is aluminium with a custom carbon fibre centre console and a 70hp Yamaha (4 stroke) outboard. She's also equipped with a 6hp back-up outboard and is great for all weather use with a full windscreen and clears to keep you dry on a rough passage or in the rain. The 'Pop Mobile' is stowed on a set of hydraulic davits at the transom which have been set up for easy launching and retrieving. Five minutes is all it takes to have her launched, tied up and ready for you and your guests to hop in and head off exploring.

Windward Passage is truly unique. Professionally built to an exceptionally high standard, the construction, detailed design features and over engineered systems onboard are usually only seen on much larger commercial vessels. Having cruised extensively through the Pacific, Indonesia, PNG, the Kimberly and down and around Tasmania, she has proven to provide security, safety and comfort whether anchored out on the reef, close to home on a weekend away or over the horizon in a remote location.

In exceptional condition and expertly maintained to the highest standard, this little ship is ready and raring to go on its next adventure.

You will not be disappointed when you inspect Windward Passage.

A private viewing is available by appointment at Coomera (Gold Coast).



ANCHORLINE

Brokerage | Insurance | Valuations

ABN: 13737 027 393

Street Address: C19, 76-84 Waterway Drive,
Coomera, QLD 4209
Postal Address: P O Box: 765, Runaway Bay,
QLD 4216
Phone: 07 5580 3377
Fax: 07 5580 0707
Email: info@anchorline.com.au
Web: www.anchorline.com.au

SPECIFICATIONS

NAME	Windward Passage
REGISTRATION NUMBER	CZ811Q (Australian Registered)
DESIGNER	Dieter Giese (Nowra, NSW)
BUILDER	Dieter Giese (Nowra, NSW)
MAKE	62' Custom Steel Motor Yacht
YEAR BUILT	1978 (Major Refit in 2016)
LENGTH (Overall)	19m
BEAM	5.94m
DRAFT	2.28m
CONSTRUCTION	6mm Corten Steel Hull, Deck and Saloon Upper wheelhouse Aluminium
COLOUR & TRIM	Cream hull, White house and Red Antifoul

ACCOMMODATION

SINGLE BERTHS	2 (crew cabin + Below deck cabin)
DOUBLE BERTHS	2 (Forward guest cabin + Master Cabin)
TOTAL ACCOMMODATION	6 persons
LINEN	Yes
TOILETS	4 x Electric toilets with freshwater flush
SWEAGE TREATMENT	Sani-Loo sewage treatment plant
HOLDING TANK	1 x 230 Litre black water tank
GREY WATER TANK	1 x 660 litre grey water tank
SHOWERS	4 + Deck shower
AIRCONDITIONING	4 x Cruiseair remote air-conditioning units for the engine room, saloon, flybridge and forward guest cabin + 2 x Self Contained Cruisair units for the main owners suite and another for the crew cabin.

GALLEY

LOCATION	Forward Saloon (Port side)
REFRIGERATION	2 x 108 Litre Vitrofrigo 24 Volt Fridges 1 x 108 litre 24 Volt Freezer 1 x 24 volt spare overflow fridge freezer in lazarette for extended usage
COOKTOP	Westinghouse 4 Burner Gas Range top
OVEN	Westinghouse Fan Forced Convection Gas Oven
GRILL	Westinghouse Electric Grill
PIZZA OVEN	Electric Pizza Oven
BREADMAKER	Yes x 1
KETTLE / TOASTER	Yes

ANCHORLINE

Brokerage | Insurance | Valuations

ABN: 13737 027 393

Street Address: C19, 76-84 Waterway Drive,
Coomera, QLD 4209
Postal Address: P O Box: 765, Runaway Bay,
QLD 4216
Phone: 07 5580 3377
Fax: 07 5580 0707
Email: info@anchorline.com.au
Web: www.anchorline.com.au

MICROWAVE	Ilve S/Steel Microwave
COFFE MACHINE	Italian Nuova Era Espresso Machine with coffee gridner
DISHWASHER	Omega S/Steel Dishwasher
WATER PRESSURE SYSTEM	Yes
WATER HEATER	2 x stainless steel Kuuma 40 litre 240 volt hot water services with main engine heat exchanger operation
BBQ	1 X Stainless steel gas barbecue on Flybridge
GAS BOTTLES	Yes
WATER MAKER	140 litres per hour (Stella Controller with auto flush unit)

LAUNDRY

LOCATION	Forward of engine room
WASHING MACHINE	Hoover 8kg Front Load Washing Machine
DRYER	Hoover 7kg Condenser Dryer
SINK	Full Size Laundry Sink in Engine Room
IRON / IRONING BOARD	Yes
CLOTHES LINE	Two large clothes lines in engine room (Capable of drying queen size sheets)
HIGH PRESSURE HOSE	Gerni 2100 Watt integrated plumbed high pressure wash unit with hose

MACHINERY & TANKS

NUMBER OF ENGINES	2
MAKE	3208 Caterpillars
HORSEPOWER	185hp
CYLINDERS	8
REDUCTION	4.2 - 1
EXHAUST TYPE	Wet
MAXIMUM SPEED	10 Knots
CRUISE SPEED	9 Knots
ENGINE HOURS (Port)	6546
ENGINE HOURS (Starboard)	6790
NUMBER OF FUEL TANKS	4
FUEL CAPACITY	18,000 Litres (currently 10,000 Litres onboard)
NUMBER OF WATER TANKS	2 x 3000L
WATER CAPACITY	6,000 Litres
STEERING	Hydraulic
CONTROLS	Kobelt Electronic Engine Controls
BOW THRUSTER	Yes (Hydraulic)
STABILISERS	Paravane Stabilisers (for use at rest and underway)

ANCHORLINE

Brokerage | Insurance | Valuations

ABN: 13737 027 393

Street Address: C19, 76-84 Waterway Drive,
Coomera, QLD 4209
Postal Address: P O Box: 765, Runaway Bay,
QLD 4216
Phone: 07 5580 3377
Fax: 07 5580 0707
Email: info@anchorline.com.au
Web: www.anchorline.com.au

ELECTRICAL EQUIPMENT

SYSTEM VOLTAGE	12v / 24v / 240v
GENERATOR	1 x 11 kva Yanmar Kohler (2939 hours) 1 x 10 kva Fischer Panda (511 hours) (Installed in 2016)
INVERTER	Victron 500
HOUSE BATTERIES	6 X Lion 120Amp/Hr
ENGINE BATTERIES	4 X Amron 70
GENERATOR BATTERY	1 X Seastrike 70
BATTERY CHARGER	Victron 500
SHORE POWER	Yes
SOLAR POWER	Yes (5 panels on the flybridge roof)
SHORE POWER LEAD	Yes

NAVIGATION EQUIPMENT

VHF RADIO	Garmin VHF + 1 x Garmin handheld VHF
HF RADIO	Codan HF 8528S Marine Transceiver with Autotune Antenna
DEPTH SOUNDER	Furuno
GPS/PLOTTER	Garmin
GPS CHARTS	Yes
GPS Interfaced with Autopilot	Yes
COMPUTER	Yes
MONITOR	Yes
AUTO PILOT	Garmin
RADAR	Furuno
SATALITE PHONE	Thrane & Thrane
COMPASS	Yes
CLOCK	Yes
BAROMETER	Yes

ENTERTAINMENT SYSTEMS

TELEVISION	108 Cm Phillips Led TV
VIDEO PLAYER	Yes
DVD PLAYER	Yes
CD PLAYER	Yes
STEREO	Fusion Sound System in Main saloon, Top Deck & Pilothouse + 108 Cm Phillips Led TV in hidden Cabinet with remote lift.
COMPUTER	Dedicated Media Computer with a Hard Drive with over 600 movies

ANCHORLINE

Brokerage | Insurance | Valuations

ABN: 13737 027 393

Street Address: C19, 76-84 Waterway Drive,
Coomera, QLD 4209
Postal Address: P O Box: 765, Runaway Bay,
QLD 4216
Phone: 07 5580 3377
Fax: 07 5580 0707
Email: info@anchorline.com.au
Web: www.anchorline.com.au

GROUND TACKLE

ANCHORS	100kg Hi Strength Manson Supreme Primary Anchor 100 kg Danforth Secondary anchor with chain and 100 metres Rope Rode.
WINDLASS	Muir Hydraulic Anchor Winch
WINDLASS CONTROL	Deck, Flybridge and Saloon Helm
CHAIN	100 metres 16 mm Galvanised Chain

SAFETY EQUIPMENT

FIRE EXTINGUISHERS	Yes x 4
EPIRB	1 x Manually activated 406 EPIRB + 1 X Float Free EPIRB
FLARES	Extensive Flare Kits for Main Vessel and Large Tender (in Date)
LIFE JACKETS	11 Standard Life Jackets + 4 X Inflatable Life Jackets
LIFE RING	2 x Foam Filled Round Rotomoulded Life Rings
LIFE RAFT	1 x 6 Person ZODIAK Life Raft 24 hr emergency pack 150 9650-ITIB
GRAB BAG	Yes (Located in Flybridge)

GENERAL INFORMATION

DECK WASH	Yes
FENDERS	Yes
MOORING LINES	Yes
AIR COMPRESSOR	1 x Origin Air 50 litre 3 hp Air Compressor
BILGE PUMPS	Automatic Bilge pumps for Forepeak, Main engine Bilge Master suite and Lazarette Bilges all with High Water Alarms + Emergency 240 volt Hi Volume Bilge pump with pressure water primer.
COVERS	Flybridge window covers Tender covers
DINGHY	1 x Highfield Superlight 2.9 mt Aluminium Hull RIB 1 x 5 metre Custom Aluminium Tender with Carbon Centre console Unit. Windscreen and clears for Centre Console Unit.
OUTBOARD	1 x 3.3 hp Mercury Outboard 1 x 70hp 4 stroke Yamaha Outboard 1 x 6hp Yamaha 4 Stroke Outboard Auxiliary
TOYS	1 x Hardbody SUP 2 x Viking Rotomoulded Kayaks 1 X Custom Glass over Ply Coral Viewer/Personal Glass Bottom Boat with lithium battery powered jet unit plus remote control and steering 1 x Folding Battery Powered Bike 1 X Powerdive battery powered Hookah unit with twin regulators
DAVITS \ CRANE	Aft Davits for Main Tender + Top Deck boom gantry rated to 3 tonne
LAST SLIPPED & ANTFOULED	March 2022

ANCHORLINE

Brokerage | Insurance | Valuations

ABN: 13737 027 393

Street Address: C19, 76-84 Waterway Drive,
Coomera, QLD 4209
Postal Address: P O Box: 765, Runaway Bay,
QLD 4216
Phone: 07 5580 3377
Fax: 07 5580 0707
Email: info@anchorline.com.au
Web: www.anchorline.com.au

NOTES:

Windward Passage is presented in immaculate condition and can be inspected at the Gold Coast by prior appointment. Please contact Anchorline (07 5580 3377) for further details.





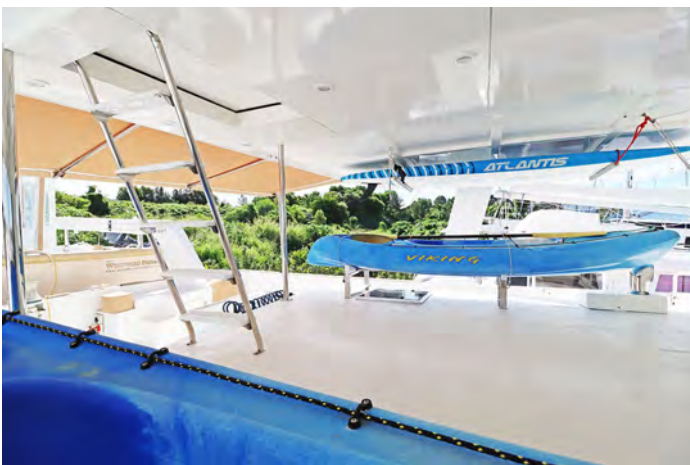
The information included in this inventory is believed to be correct, but is not guaranteed. This vessel is subject to prior sale or removal from sale without notice.



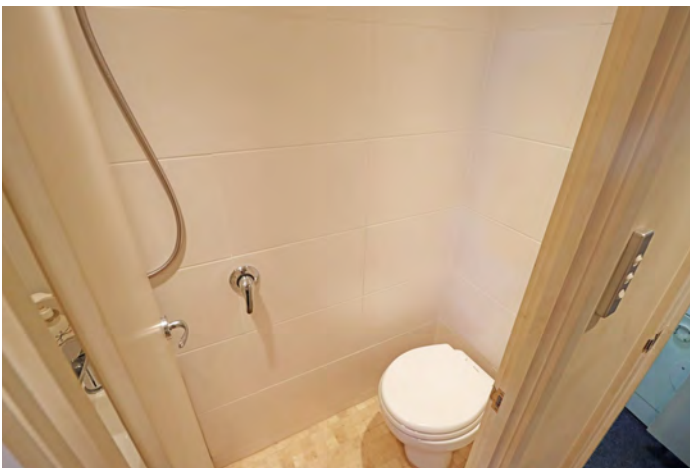
The information included in this inventory is believed to be correct, but is not guaranteed. This vessel is subject to prior sale or removal from sale without notice.



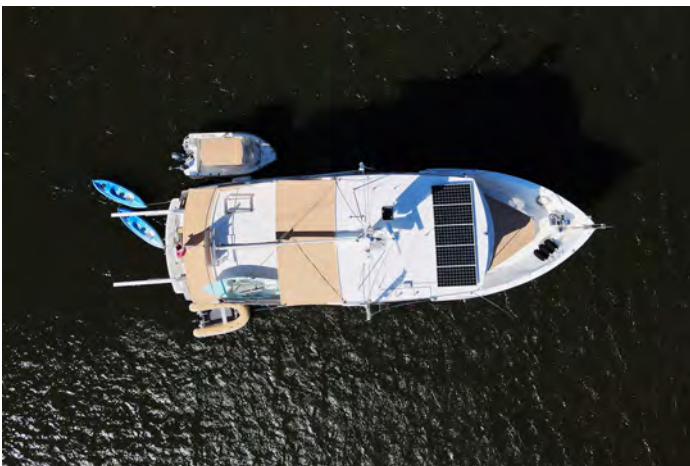
The information included in this inventory is believed to be correct, but is not guaranteed. This vessel is subject to prior sale or removal from sale without notice.



The information included in this inventory is believed to be correct, but is not guaranteed. This vessel is subject to prior sale or removal from sale without notice.



The information included in this inventory is believed to be correct, but is not guaranteed. This vessel is subject to prior sale or removal from sale without notice.



The information included in this inventory is believed to be correct, but is not guaranteed. This vessel is subject to prior sale or removal from sale without notice.



The information included in this inventory is believed to be correct, but is not guaranteed. This vessel is subject to prior sale or removal from sale without notice.